

# Stencil Machines

Stenciling is a quick, cost efficient way to mark products for shipment or to identify plant areas.

Diagraph stencil machines have been the industry standard since we invented the stencil cutter in 1893. Today we manufacture stencil cutters using leading-edge manufacturing systems and techniques.



### *Stencil Machine Quick Facts:*

- ▶ Available sizes:
  - 1/8" (3.18mm)      -1/4" (6.35 mm)
  - 3/8" (9.525mm)    -1/2" (12.7 mm)
  - 3/4" (19.05 mm)   -1" (25.4 mm)
  - 1 3/4" (44.45 mm) -2" (50.8mm)
- ▶ Covered by a one-year warranty on parts
- ▶ Our 1/2", 3/4" and 1" Standard Machines can be specifically retrofitted to cut maylar for an additional \$100 charge.



## Stencil Machine Kits

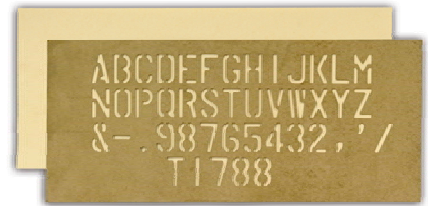
### *Stencil Machine Kit Includes:*

- ▶ Stencil Machine
- ▶ 3" Oneshot Assembly
- ▶ A Oneshot Black Ink Cartridge
- ▶ 25 sheets of 6.5 x 20 .015 stencil board

<b>Stencil Machine Cutter Kits (standard)</b>			
Model	Letter per. Ft.	Max. # of Lines	Height of max. # of lines
1/4" stencil machine (6.35mm)	48	10	4-1/8" (104.78 mm)
1/2" stencil machine (12.7 mm)	22	6	4-1/2" (114.3 mm)
3/4" stencil machine (19.05 mm)	15	4	4-1/2" (114.3 mm)
1" stencil machine (25.4 mm)	15	4	5" (127 mm)
1-3/4" jumbo stencil machine (44.45 mm)	9	4	9" (228.6 mm)
<b>Stencil Machine Cutter Kits (special order)</b>			
1/8" stencil machine (3.18 mm)	81	14	4-1/8" (104.78 mm)
3/8" stencil machine (9.525 mm)	34	7	4-1/2" (114.3 mm)
2" jumbo stencil machine (50.8 mm)	9	4	11-5/8" (295.28 mm)

# Stencil Board

Diagraph .015 Stencil Board is processed with a special formula of double-boiled linseed oil, cured in our own plant and cut with-the-grain for extra rigidity. It lubricates with each cut, extending the life of your stencil machine, and resists ink absorption so the same stencil can be used many times.



<b>Parcel-Pak Stencil Board (50 lbs.)</b>			
<b>Sheet Size (H x W)</b>	<b>Approx Sheets/Pack</b>	<b>Sheet Size (H x W)</b>	<b>Approx Sheets/Pack</b>
3"x 36" PP .015 76.2 mm x 914.4 mm	750	7"x 20" PP .015 177.8 mm x 508 mm	550
4"x 20" PP .015 101.6mm x 508mm	1050	7"x 24" PP .015 177.8mm x 609.6mm	500
4"x 36" PP .015 101.6mm x 914.4 mm	550	8"x 36" PP .015 203.2mm x 914.4mm	300
5"x 20" PP 0.15 127mm x 508mm	800	8"x 48" PP .015 203.2mm x 1,219.2mm	200
6"x 20" PP .015 152.4mm x 508mm	650	11"x 36" PP .015 279.4mm x 914.4mm	200
6"x 36" PP .015 152.4mm x 914.4mm	350	12"x 48" PP .015 304.8mm x 1,219.2mm	150
6-1/2"x 16 PP .015 165.1mm x 406.4mm	750	24"x 36" PP .015 609.6mm x 914.4mm	100
6-1/2"x 20" PP .015 165.1mm x 508mm	650	24"x 40" PP .015 508mm x 1,016mm	100
6-1/2"x 24" PP .015 165.1mm x 609.6mm	550		

<b>Dispensa-Pak Stencil Board (23 lbs.)</b>	
<b>Sheet Size (H x W)</b>	<b>Approx Sheets/Pack</b>
4"x 20" DAP .015 101.6mm x 508mm	450
5"x 20" DAP .015 127mm x 508mm	350
6"x 20" DAP .015 152.4mm x 508mm	300
6-1/2"x 20" DAP .015 165.1mm x 508 mm	250
6-1/2"x 24" DAP .015 165.1mm x 609.9mm	250
7"x 20" DAP .015 177.8mm x 508mm	250
7"x 24" DAP .015 177.8mm x 609.6mm	250

**THE LABEL GUY**

The Label Guy  
 5198 Arlington Ave Suite 115  
 Riverside, CA 92504  
 951-340-0222 ,800-293-1813  
 FAX 951-340-0005  
[www.TheLabelGuy.com](http://www.TheLabelGuy.com)  
 E-mail:sales@thelabelguy.com